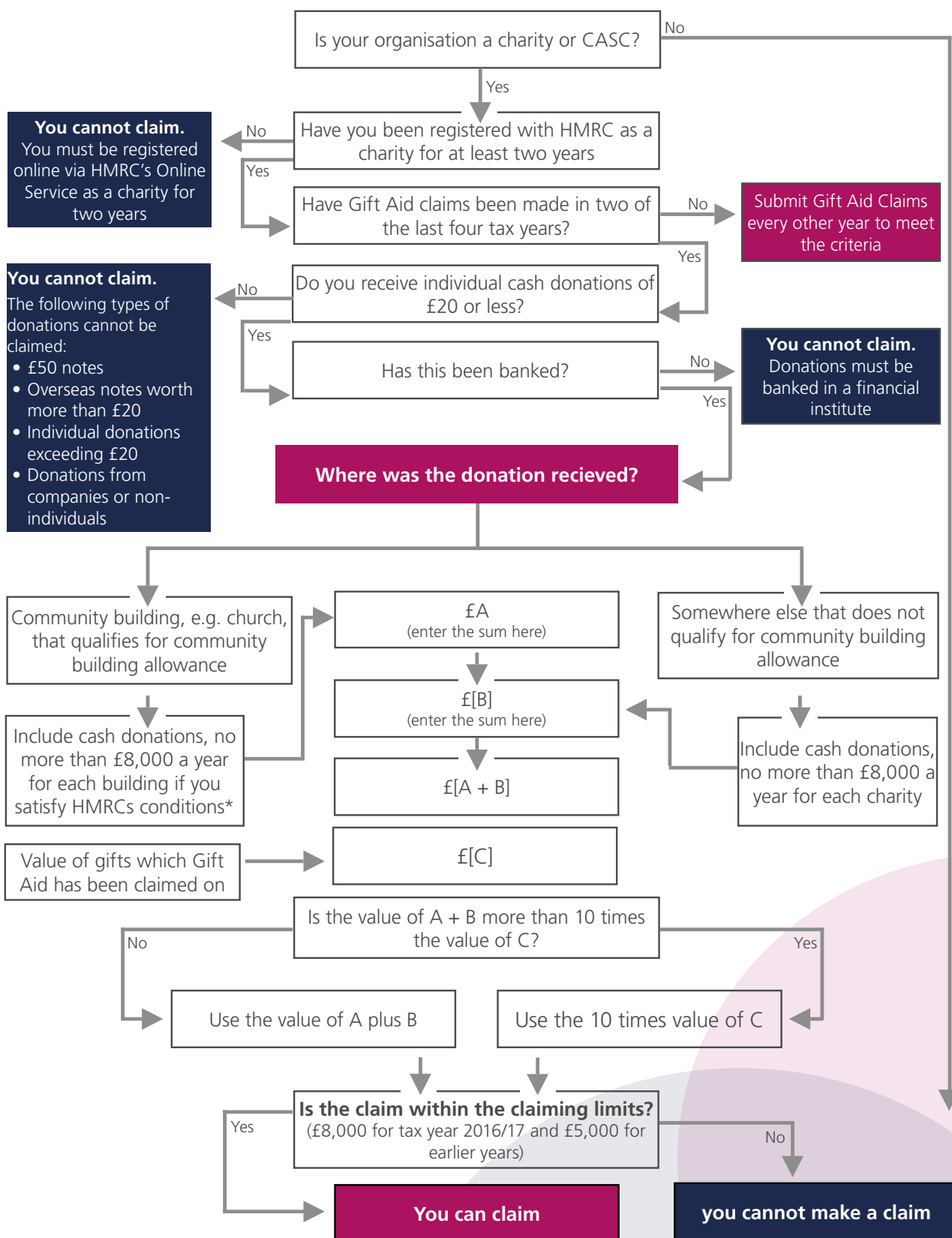




# Gift Aid Small Donations Scheme Flow Chart

These are the basic rules for determining your charity's status when applying for further public spending initiatives.



For further information or advice on the Gift Aid Small Donations Scheme, please contact Suda Ratnam at [suda@raffingers.co.uk](mailto:suda@raffingers.co.uk).

\* Further information on the Gift Aid Small Donations Scheme can be found here:

<https://www.gov.uk/government/publications/charities-detailed-guidance-notes/chapter-8-the-gift-aid-small-donations-scheme>